

## INSTRUCTION SHEET

### Rear Manual Unlocking Button for Frame Mounting

#### HS5E / HS5E-K / HS5L Series

Thank you for purchasing this IDEC product. Confirm that the delivered product is what you have ordered. Read this instruction sheet to make sure of correct operation. Make sure that the instruction sheet is kept by the end user.

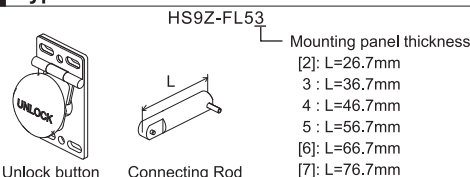
### SAFETY Precautions

In this operation instruction sheet, safety precautions are categorized in order of importance to Caution :

#### CAUTION

Caution notices are used where inattention might cause personal injury or damage to equipment.

### 1 Type



Type	Mounting panel thickness		
	When installing the HS5E-□□ / HS5E-K□□ / HS5L-□□ (rear unlocking button type, sold separately) on the panel directly.	When installing in the switch cover unit of door handle actuator (HS9Z-DH5C, sold separately).	When installing on the mounting plate (HS9Z-SP51, sold separately).
[HS9Z-FL52]	13<X≤23	10<X≤20	3<X≤13
HS9Z-FL53	23<X≤33	20<X≤30	13<X≤23
HS9Z-FL54	33<X≤43	30<X≤40	23<X≤33
HS9Z-FL55	43<X≤53	40<X≤50	33<X≤43
[HS9Z-FL56]	53<X≤63	50<X≤60	43<X≤53
[HS9Z-FL57]	63<X≤70	60<X≤70	53<X≤60

Note: Mounting panel refers to mounting frame or panel. Type Nos. in [ ] are not supplied as standard contact IDEC if required.

#### CAUTION

• Choose the appropriate kit according to the thickness of mounting panel, otherwise malfunction will be caused, such as pressing the rear unlocking button does not unlock the actuator.

### 2 Specifications

Applicable Model	HS5E Interlock Switch Rear Manual Unlock Button type : HS5E-□44L**G HS5E-K Key Type Interlock Switch Rear Manual Unlock Button type : HS5E-K□□L※※-□■ HS5L Interlock Switch Rear Manual Unlock Button type : HS5L-□44L▲-G (Includes the usage with switch cover unit (HS9Z-DH5C, sold separately) .)
Weight (approx.)	HS9Z-FL52: 70g HS9Z-FL53: 90g HS9Z-FL54: 110g HS9Z-FL55: 130g HS9Z-FL56: 150g HS9Z-FL57: 170g

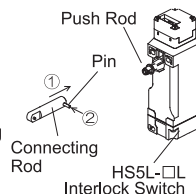
- Interlock switch is not attached to the HS9Z-FL5\* and must be ordered separately.
- Refer to the specifications of the HS5E / HS5E-K / HS5L Interlock switch for the specifications of the Interlock switch used.

### 3 Mounting

Mounting Method

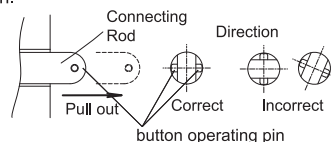
① Install the connecting rod on the push rod on the HS5E-□□ / HS5E-K□□ / HS5L-□□ interlock switch (sold separately).

② A pin is attached to the connecting rod. Insert the pin into the hole in the push rod, using pliers.



\* When using the HS5E-□□ / HS5E-K□□ / HS5L-□□ (rear unlocking button type) in combination with the switch cover unit (HS9Z-DH5C, sold separately), provide mounting procedures ① and ② to the interlock switch before installing on the mounting bracket of the switch cover unit.

③ Pull the connecting rod from the hole in the mounting frame, and turn the button operating pin to the horizontal position.



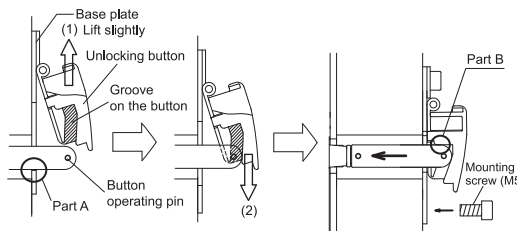
#### CAUTION

Ensure that the connecting rod is pulled out completely and it is horizontal to the interlock switch, otherwise the unlocking button cannot be installed.

\* For the mounting hole dimension of the interlock switch, refer to the dimension shown on the instruction sheet of interlock switch.

④ Lift the unlocking button slightly (1) until the button touches the connecting rod at part A, and then lower the button until the groove on the button fits the button operating pin on the connecting rod.

⑤ Press the button (unlocked status), and lower the button (2) until the button and the connecting rod touch on part B, then fasten using the screw.



⑥ After installing using the mounting screws (M5), check whether locking and unlocking operations can be performed.

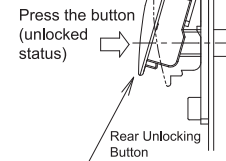
- Recommended tightening torque of mounting screws : 4.8 to 5.2 N•m
- \* The mounting screw must be provided by the user.

#### CAUTION

- After installing using the mounting screws, apply Loctite to the screws so that they do not become loose.
- When the torque is not enough to recommended screw tightening torque, make sure that the screw do not become loose by using adhesive sealants etc. to keep right operation and mounting positioning.

### 4 Precautions for Operation

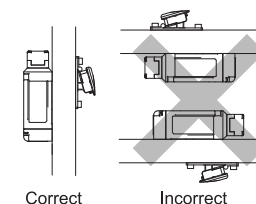
- About Rear Unlocking Button
- The rear unlocking button is used by the operator confined in a hazardous area in an emergency situation, so that the operator can escape from the area.
- Pressing the rear unlocking button, the interlock switch is forced to unlock, allowing the door to be opened.
- To re-operate the machine, pull back the button. When the button is pressed, the interlock switch cannot be locked, and the main lock monitor circuit remains open.



#### CAUTION

- Make sure that foreign objects are not caught between the button and the base plate, otherwise pressing the button may not unlock the actuator.
- Install the rear unlocking button in the place where only the operator inside the hazardous area can use it. Do not install the button in the place where an operator outside the hazardous area can use it, otherwise the interlock switch can be unlocked during usual machine operation, causing danger.
- Operate the rear unlocking button by hand only. Do not operate using a tool or with excessive force. Do not apply force from the direction other than the proper direction, otherwise the button will be damaged.

Ensure that the rear unlocking button is installed in the correct direction as shown in the figure. Do not install in incorrect directions, otherwise malfunction will be caused.

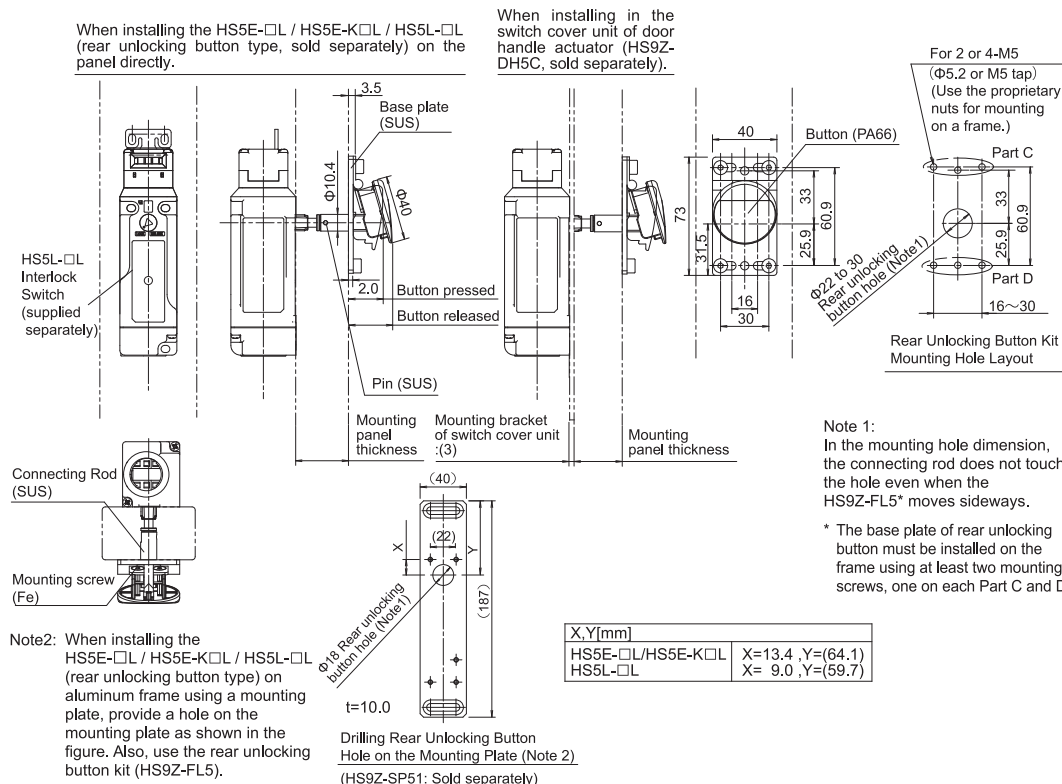


- Do not apply a shock exceeding 100 m/s<sup>2</sup>, otherwise the rear unlocking button will malfunction.

#### CAUTION

- Turn power off before starting installation, removal, wiring, maintenance or inspection, otherwise electric shock or fire may result.
- Provide sufficient durability to the frame where the rear unlocking button is installed.
- Use the rear unlocking button kit with the HS5E / HS5E-K / HS5L interlock switch only.
- Do not modify or disassemble the rear unlocking button kit, otherwise the function of the button kit will be lost, causing a breakdown or an accident.

### 5 Dimension (mm)



When installing the HS5E-□□ / HS5E-K□□ / HS5L-□□ (rear unlocking button type, sold separately) on the panel directly.

When installing in the switch cover unit of door handle actuator (HS9Z-DH5C, sold separately).

For 2 or 4-M5 (Φ5.2 or M5 tap) (Use the proprietary nuts for mounting on a frame.)

Rear Unlocking Button Kit Mounting Hole Layout

Note 1: In the mounting hole dimension, the connecting rod does not touch the hole even when the HS9Z-FL5\* moves sideways.

\* The base plate of rear unlocking button must be installed on the frame using at least two mounting screws, one on each Part C and D.

X,Y[mm]	
HS5E-□□/HS5E-K□□	X=13.4 ,Y=(64.1)
HS5L-□□	X= 9.0 ,Y=(59.7)

### 6 Precaution for Disposal

- Dispose of the HS9Z-FL5\* as an industrial waste.