

INSTRUCTION SHEET

DIN Rail Mount Socket

SJ Series

Type No. SJ1S-05BS, SJ2S-05BS

Read this instruction sheet to make sure of correct operation before starting installation, wiring, operation, maintenance, and inspection of this product. Also make sure that this instruction sheet is kept by end users. Special electrical expertise is required to install, wire, and operate the SJ series sockets. People without such expertise must not use the SJ series sockets.

Safety Precautions

All SJ Series sockets are manufactured under IDEC's rigorous quality control system, but users must add a backup or failsafe provision to the control system using the SJ series sockets in applications where heavy damage or personal injury may be caused in case the SJ series sockets should fail. In this instruction sheet, safety precautions are categorized in order of importance to Warning and Caution:

WARNING

Warning notices are used to emphasize that improper operation may cause severe personal injury or death.

CAUTION

Caution notices are used where inattention might cause personal injury or damage to equipment.

WARNING

- Turn off power to the SJ series sockets before starting installation, removal, wiring, maintenance, and inspection of the SJ series sockets. Failure to turn power off may cause electrical shocks or fire hazard.

CAUTION

- Use proper wires to meet the voltage and current requirements.
- Make sure that relay and output equipment are connected completely. Incomplete connection may cause overheating, resulting in fire hazard.
- To ensure safety, make sure that all descriptions in the operation instructions are followed strictly.
- Prevent metal fragments and pieces of wire from dropping inside the SJ series sockets. Ingress of such fragments and chips may cause fire hazard, damage, or malfunction.
- Do not disassemble, repair, or modify the SJ series sockets.
- Make sure that wires are connected correctly. Incorrect connection may cause malfunction, overheating, or fire hazard.

1. Models (Type No., Applicable Relays, Accessories, Maintenance Parts)

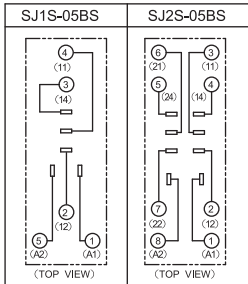
1-1 Please check the product you have and use the applicable relay in the table below.

Type	Type No.	No. of Poles	Applicable Relays
Standard	SJ1S-05BS	1	RJ1S series
Screw Terminal	SJ2S-05BS	2	RJ2S series, RJ22S series, RF2S series

1-2 Accessories / Maintenance Parts

Name	Type No.	Ordering Type No.	Package Quantity
Jumper	SJ9Z-JF8S	SJ9Z-JF8S	10
Release Lever	SJ9Z-CS	SJ9Z-CS	10

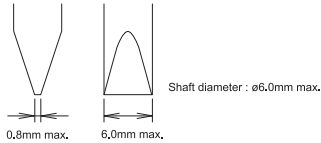
2. Terminal Arrangement



3. Applicable Screwdriver

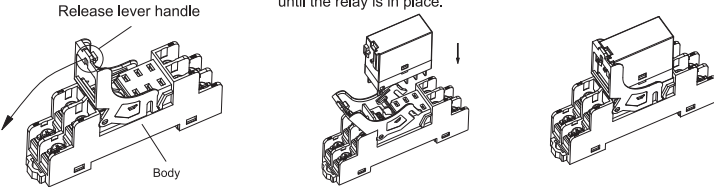
When wiring, please use a screwdriver with the following tip shape and shaft diameter.

- Phillips: PH2, shaft diameter $\phi 6.4$ mm max.
- Flat blade: Shown at right



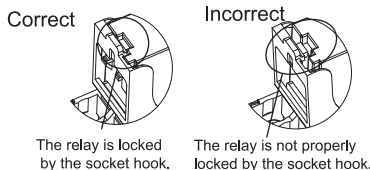
4. Installing the Relay

- (1) To unlock, pull the release lever handle in the direction of the arrow.
- (2) Install the relay on the socket by pushing down the top of the relay, until the relay is in place.
- (3) Installed securely.



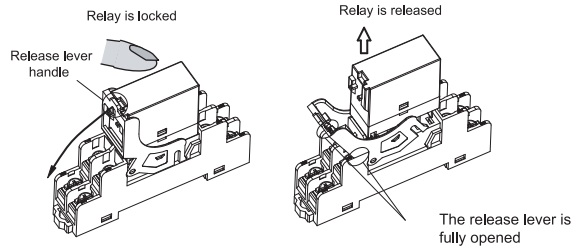
CAUTION

- Insert the relay into the socket completely, otherwise the relay may fall off during operation.



5. Removing the Relay

Pull the release lever handle in the direction of the arrow until the release lever is fully opened. When removing the relay, grasp the top of the relay with your fingers.

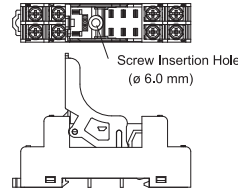


CAUTION

- When removing the relay, grasp the top of the relay with your fingers. Otherwise the relay may jump out of the socket and may be damaged.
- Operating the release lever with excessive force may damage the release lever.

6. Panel Mounting

When mounting directly to the panel, use M3 screws to mount it to the panel. In that case, use a driver with a shaft diameter of $\phi 5.8$ mm or less.

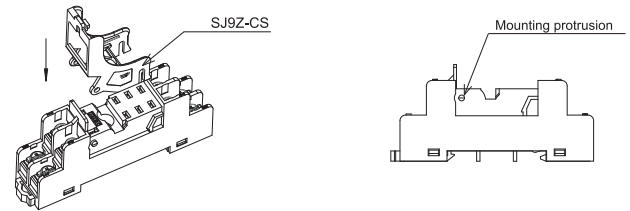


CAUTION

- Tighten the M3 screw to a torque of 0.6 to 0.8 N · m maximum, otherwise the socket may be damaged.

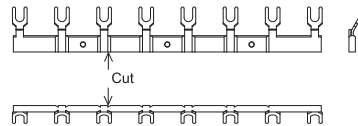
7. Installing the Release Lever

If you need to install a release lever, attach it to the corresponding projection on the socket as shown in the figure below.



8. When using cut the Jumper

Cut along the groove with nippers according to the number of poles to be used.



CAUTION

- Since the metal inside will be exposed at the cut part, insulate the end face. Electric shock or insufficient insulation distance may result.

9. Safety Precaution

9-1. Confirm the rated current of the SJ socket with the table below and make sure that the current does not exceed these values.

	SJ1S-05BS			SJ2S-05BS		
Operating temperature highest limit	70°C	55°C	40°C	70°C	55°C	40°C
Single Mounting	12A			8A		
Collective mount	When DC relay is mounted			8A		
	When AC relay is mounted			8A		
	(*1)	12A	(*2)	8A		

- *1) 12A when there is 5mm or more space between adjacent socket.
- *2) 8A when there is 10mm or more space between adjacent socket.

9-2. Rail Mounting and Removing

CAUTION

- When mounting the socket on a DIN rail, be sure to fix both sides with End Clip BNL6 (option).
- Do not mount the socket on the rail and remove the socket from the rail at temperatures below -20°C, otherwise the socket may be damaged.

10. Disposal Precautions

CAUTION

- When disposing of this product, treat it as industrial waste.

IDEC CORPORATION

<http://www.idec.com>

1175 Elko Drive Sunnyvale, CA 94089-2209, USA
 Manufacturer: IDEC CORP.
 2-6-64 Nishimiyahara Yodogawa-ku, Osaka 532-0004, Japan
 EU Authorized Representative: APEM SAS
 55, Avenue Edouard Herriot BP1, 82303 Caussade Cedex, France
 UK Authorized Representative: APEM COMPONENTS LIMITED
 Drakes Drive, Long Crendon, Buckinghamshire, HP18 9BA, UK